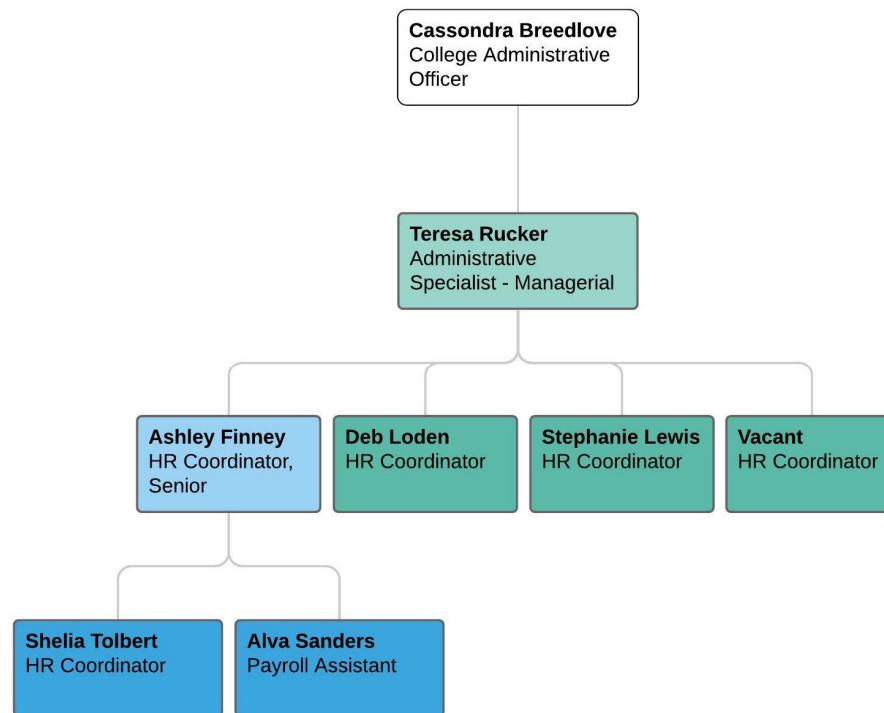


# HUMAN RESOURCES

## Team Introduction

COLLEGE OF ARTS & SCIENCES

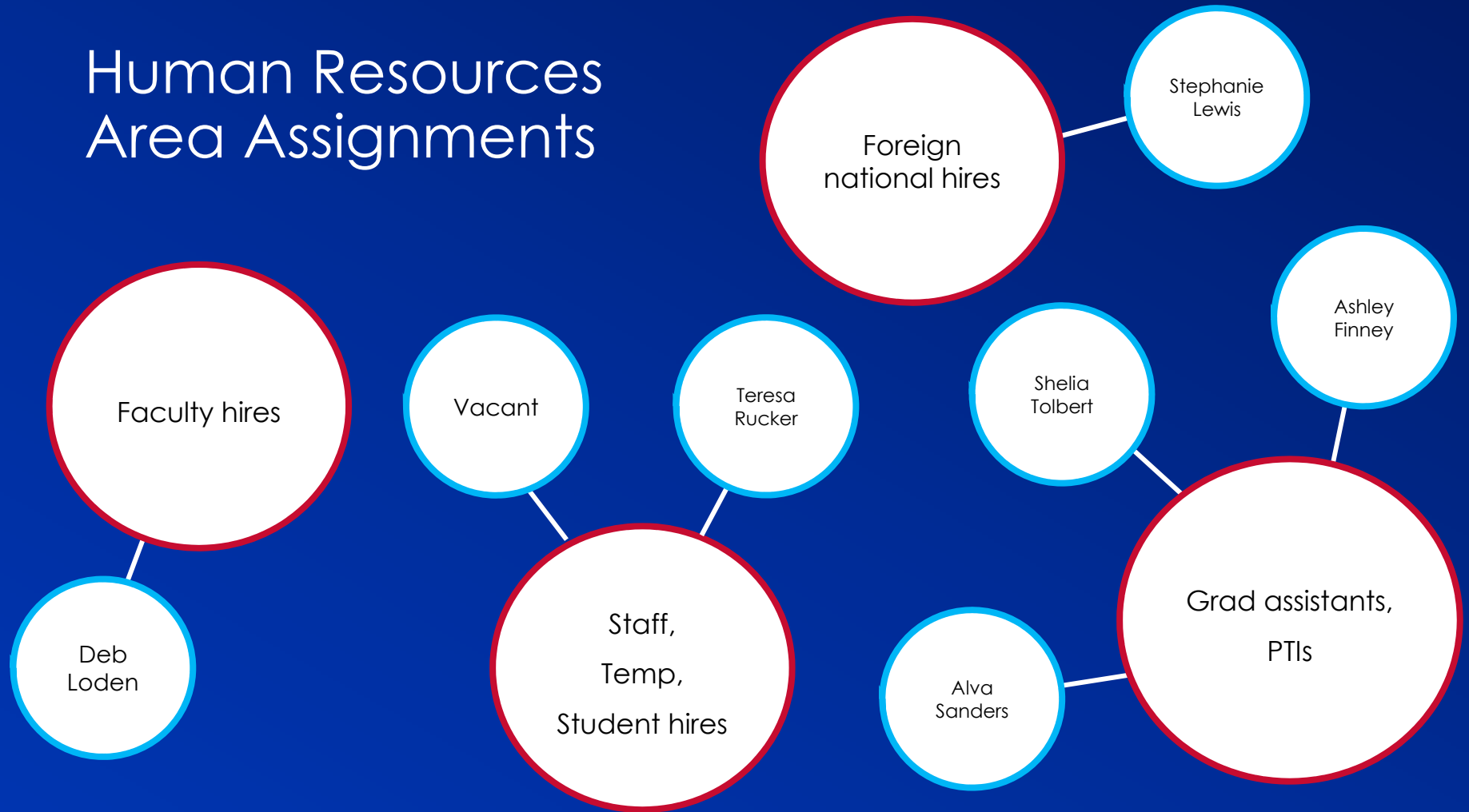
# MEET THE HUMAN RESOURCES TEAM



eff. 07/01/2021



# Human Resources Area Assignments



# HOW DOES **HUMAN RESOURCES** SUPPORT YOUR DEPARTMENT?

Faculty/Staff/Temp/Student  
Hires/Graduate Hires

Employee Relations

Position and Performance  
Review

Graduate and Part time  
Instructor Payroll (PPGRA)

MSS Transaction for pay and  
Alternative Pay

Training and Development  
Assessment





## WHAT'S STAYING THE SAME?

- Hire process for faculty and staff managed by college Human Resources
- Performance Appraisal Management
- College Human Resources liaises with Central Human Resources





## WHAT'S NEW?

- Process for departmental functions for staff and faculty hires
- All foreign national hires will be managed and processed through college HR
- More interaction across the teams for initiation of transaction and approvals



# WE'RE HERE TO SUPPORT YOU!

**Cassandra M. Breedlove**, College Administrative Officer: [cbreedlove@gsu.edu](mailto:cbreedlove@gsu.edu)

**Teresa Rucker**, Administrative Specialist - Managerial: [teresa@gsu.edu](mailto:teresa@gsu.edu)

**Ashley Finney**, Human Resources Coordinator, SR: [afinney@gsu.edu](mailto:afinney@gsu.edu)

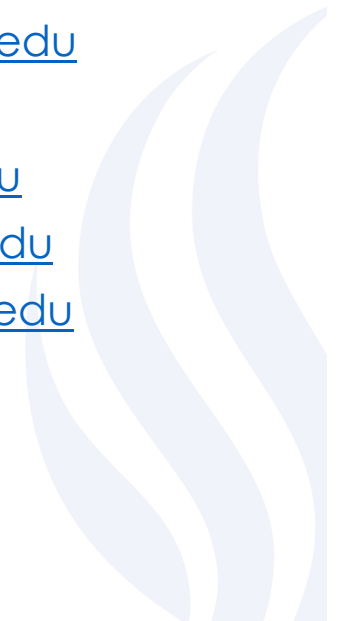
**Alva Sanders**, Payroll Assistant: [asanders31@gsu.edu](mailto:asanders31@gsu.edu)

**Deb Loden**, Human Resources Coordinator: [dloden1@gsu.edu](mailto:dloden1@gsu.edu)

**Shelia Tolbert**, Human Resources Coordinator: [stolbert6@gsu.edu](mailto:stolbert6@gsu.edu)

**Stephanie Lewis**, Human Resources Coordinator: [slewis50@gsu.edu](mailto:slewis50@gsu.edu)

*We're also available via Teams*





# QUESTIONS?

*Please use 'raise hand' feature or type question into the chat*

